



SOURASHTRA COLLEGE, MADURAI. (Autonomous)

(A Linguistic Minority Co-education Institution)

(Affiliated to Madurai Kamaraj University & Re-Accredited with 'B+' Grade by NAAC)

Vilachery Main Road, Pasumalai (P.O), Madurai-625004.

Contact No.: 87542 09994

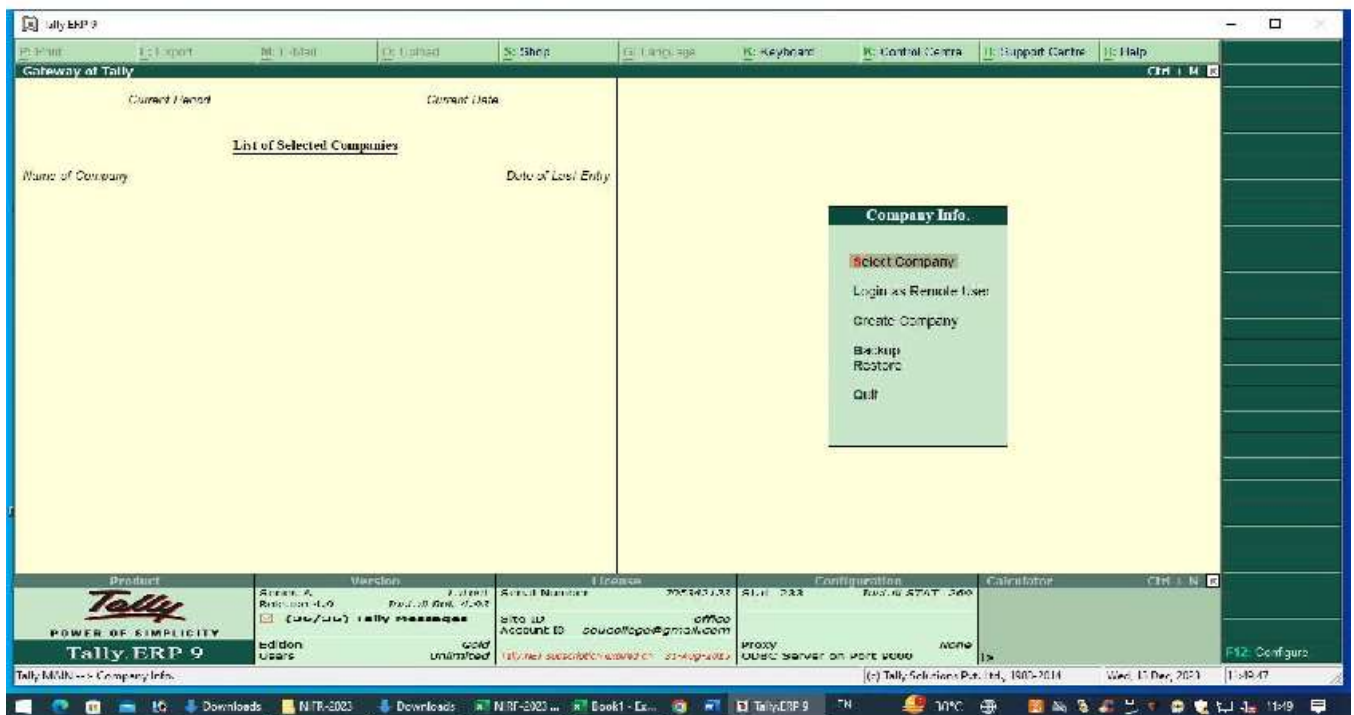
 sourashtracollege.com

87542 08885

 soucollege@gmail.com

2.5.3 – Tally Software used in Office for Accounts

SOFTWARE USED IN OFFICE FOR ACCOUNTS





SOURASHTRA COLLEGE, MADURAI. (Autonomous)

(A Linguistic Minority Co-education Institution)

(Affiliated to Madurai Kamaraj University & Re-Accredited with 'B+' Grade by NAAC)

Vilachery Main Road, Pasumalai (P.O), Madurai-625004.

Contact No.: 87542 09994

🌐 sourashtracollege.com

87542 08885

✉ soucollege@gmail.com

STAFF SALARY DETAILS IN GOVERNMENT WEBSITE

